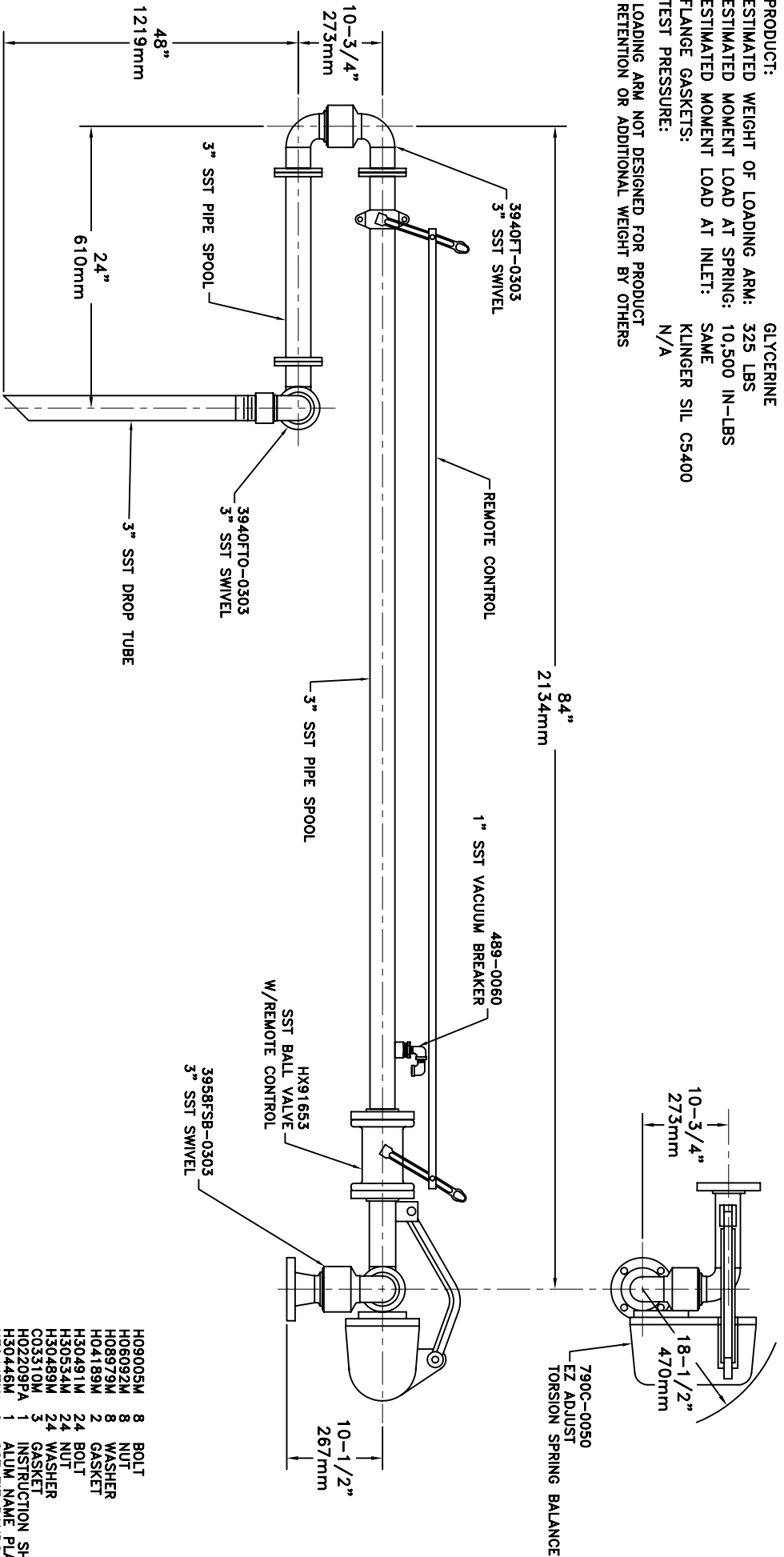


MATERIALS OF CONSTRUCTION: 316L STAINLESS STEEL
SWIVEL JOINT SEALS: TEFLON

PRODUCT: GLYCERINE
ESTIMATED WEIGHT OF LOADING ARM: 325 LBS
ESTIMATED MOMENT LOAD AT SPRING: 10,500 IN-LBS
ESTIMATED MOMENT LOAD AT INLET: SAME
FLANGE GASKETS: KLINGER SIL CS400
TEST PRESSURE: N/A
LOADING ARM NOT DESIGNED FOR PRODUCT RETENTION OR ADDITIONAL WEIGHT BY OTHERS



H09005M	8	BOLT
H08092M	8	NUT
H08979M	8	WASHER
H04189M	2	GASKET
H30491M	24	BOLT
H30534M	24	NUT
H30489M	24	WASHER
C03310M	3	GASKET
H02209FA	1	INSTRUCTION SHEET
H30445M	1	ALUM. NAME PLATE
H30447M	2	SST TIE BANDS

C32RF-G897

3"

OPW *Engineered Systems*
 www.opw-es.com

OPERATION	A	B	C	D
WELD				
MACHINE				
ASSY & TEST				
ASSY ONLY				
TEST ONLY				
PAINT				

OPERATIONS PER ASSY.
 1. HIGHLIGHT RECD. OPERATIONS PER ASSY.
 2. RECORD CLOCK NO. WHEN COMPLETE.

DRAWN BY: JLP
 CHECKED BY: []
 QUOTE NO. 13954
 SCALE: NONE
 DATE: 10/06/08
 DRAWING NO. SK13954A